



Vietnam

HALONG BAY & RED RIVER

HALONG BAY TO VIET TRI - 10 NIGHTS

UPSTREAM

On a Pandaw ship travellers are able to explore the key sites of Northern Vietnam by river ship traversing the Red River delta and its main tributaries, connecting the wonders of Halong Bay with the excitements of downtown Hanoi, and then on into the interior, well off the beaten track. This is a combination of scenic beauty, lively and interesting (sometimes industrial) life of the river and exploring rivers where no other tourist craft operate.

Sailing deep into Highland Vietnam we will discover the mountain villages and a number of tribal areas. We will go as far as is navigable up the Song Red River and then down the little known Da or Black River. Note that this is a real river expedition and itineraries and schedules very much subject to change due to uncertain local conditions.



[VIEW ONLINE](#)

CONTENTS



Route Map p.3

Itinerary Upstream p.4

Pandaw Stateroom p.8

Ships - RV Angkor Pandaw p.9

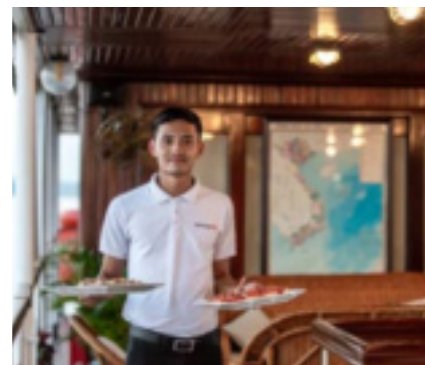
Pre & Post Tours p.10

Other information p.18

ROUTE MAP



UPSTREAM



ITINERARY UPSTREAM



DAY 1 HALONG BAY

Transfer from Hanoi to Halong Bay to embark your Pandaw ship followed by lunch on board. Cast off in the afternoon with a welcome cocktail for an evening sail, dropping anchor in a sheltered bay amidst the beautiful island scenery.

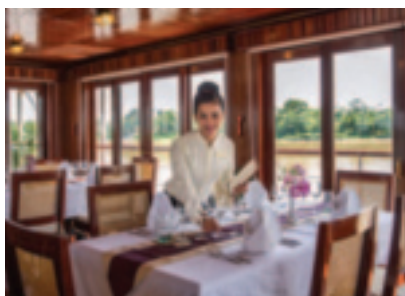
DAY 2 HALONG BAY

Morning sail around Halong Bay and beyond with its 1,500 dramatic limestone islands and extraordinary rock formations, dating back 20 million years.

We make a stop at Viet Hai Village and continue our journey by mountain bike or electric buggy to visit the village's vegetable farm and typical village houses. It is a breathtaking trip along a small road winding its way through the limestone rocks.

In the afternoon we will continue cruising towards Lan Ha Bay for a visit to a floating fishing house.

Weather dependent, we will end the day with cocktails at a beautiful beach in Halong Bay.



DAY 3 HALONG BAY

Our exploration of Halong Bay continues and we stop at the so called "Dark and Bright Cave". Take a kayak or a local basket boat rowed by fishermen and enter this remarkable cave into an enclosed area similar to a crater. Bats can be heard in the cave and massive stalagmites hang from the ceiling.

In the afternoon, we leave Halong Bay and enter the river where we drop anchor near Hai Phong.

DAY 4 THE KINH THAY RIVER

Observe the lively and interesting life of the Kinh Thay river, a key commercial waterway. In the afternoon we visit Thanh Ha Commune, considered the origin of water puppetry in Vietnam. After a stroll or bicycle through the quaint village, we enjoy a private water puppet show set under shade by a beautiful pond of lotus and lilies, as it has been enjoyed for centuries.

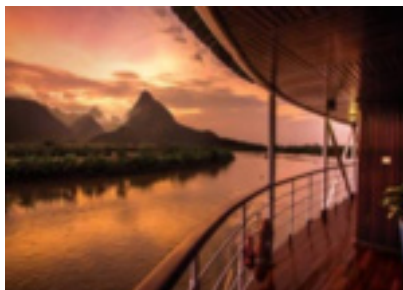
We continue cruising until late evening and drop anchor midstream.

DAY 5 DAY RIVER

We sail along the Lower Red River and Day River this morning whilst getting more acquainted with your expedition vessel as you enjoy a ship tour. After lunch onboard we head ashore to Co Chat village, Nam Dinh. Here we visit local craftspeople making silk by hand and the local markets filled with exotic produce.



ITINERARY UPSTREAM



DAY 6 KHANH THIEN VILLAGE

We continue our exploration of the Red River Delta today, sailing toward Ninh Binh before mooring at Khanh Thien Village. We disembark in the morning for a journey to Phat Diem, home to Phat Diem Cathedral, a 19th-century Roman Catholic church built in an eclectic blend of Vietnamese and European architectural styles. After lunch we explore Khanh Thien Village by local transportation or bicycle and discover a host of handicrafts including water hyacinth weaving and a variety of rice paper and cakes. We end the evening with a performance by the locals of 'Chau Van' singing, an ancient art form local to this area.



DAY 7 NINH BINH

Discover 'Halong on Land' today as we visit Ninh Binh and take small bamboo rowing boats through the magnificent limestone caves. Visitors in September and October or April and May will witness the valleys shine golden as the rice fields prepare for harvest. We then return to our ship and sail upstream on the Red River towards Hanoi.



DAY 8 HANOI

Dropping anchor in the bustling city of Hanoi, passengers will visit some highlights of this Asian metropolis including must-sees like the notorious Vietnam war prison known as the Hanoi Hilton and the Temple of Literature, Vietnam's first University that is dedicated to the Chinese Philosopher Confucius. We also stop outside The Ho Chi Minh Mausoleum along the way to discuss the work required to preserve the body of 'Uncle Ho.' In the afternoon we take a walking tour of Hanoi old quarter, a bustling maze of food and shopping that is an assault on the senses. We visit a coffee shop to learn about Vietnam's famous coffee making industry and try an authentic egg coffee.



DAY 9 BAT TRANG CERAMIC VILLAGE

This morning we visit Bat Trang ceramic village, a hub of ceramic production for generations. The ceramics made here are famous throughout Vietnam and adorn many homes both north and south. Before returning to the ship, a local dance troupe will treat us to a lion dance on the pier. This colourful and energetic dance is customary during festivals throughout Vietnam, most notably during Tet. We then set sail into the lesser visited upper Red River beyond Hanoi. We make a stop at a small village dedicated to the handmade production of Vietnam's most famous headwear, the Non La conical hat before continuing to Thay Pagoda. Hardly known, yet with exquisite temples dating from the 11th century, we visit this beautiful temple beside a lake and explore the village that surrounds the pagoda.



ITINERARY UPSTREAM



DAY 10 THE UPPER RED RIVER

In the morning we go ashore to visit the UNESCO praised village of Duang Lam. This ancient village is a well preserved example of a traditional Vietnamese village from centuries ago with intricate architecture and fascinating culture. In the afternoon we visit the smith village of Ly Nhan to witness first-hand the traditional production methods still being used to this day. We then sail upstream for your farewell dinner onboard.



DAY 11 VIET TRI

Disembark after breakfast and enjoy a morning excursion en route to Hanoi. We start with a visit to Hung Lo temple where we will be serenaded with traditional folk music as well as enjoy an exploration this quaint traditional town. Lunch will be served at a local restaurant followed by a transfer to Hanoi Noi Bai International Airport or Hanoi City.

WHATS INCLUDED & TRANSFERS UPSTREAM

Cruise Price Includes: Entrance fees, guide services (English language), gratuities to crew, main meals, local mineral water, jugged coffee, teas & tisanes. Transfers between ports of embarkation and Hanoi International Airport at the start and end of the voyage.

Cruise Price Excludes: International flights, port dues (if levied), laundry, all visa costs, fuel surcharges (see terms and conditions), all beverages except local mineral water, jugged coffee, teas & tisanes and tips to tour guides, local guides, bus drivers, boat operators and cyclo drivers.

Transfers & Joining

DAY 1 HALONG BAY

TRANSFER FROM HANOI AIRPORT

We pick you up at Hanoi Noi Bai International Airport. Last departure is no later than 10:30 (Unless there are any delays with your flight). Your guide will be waiting for you with a Pandaw Sign at column No12. On the right hand sided of the international arrival exit. Arrival in Halong Bay at 12.00.

If you encounter any difficulties, please contact our emergency number of Vietnam +84 936 903 168.

Please note: Guides and drivers are not allowed inside the terminal building. We will be waiting for you outside with a Pandaw sign. Hanoi Airport has two exits; if you don't see us, please try the other exit on the same level (30 meters).

TRANSFER FROM HANOI CITY

Meeting point for embarkation in Hanoi will be the Pan Pacific Hotel (1 Thanh Nien Road, Ba Dinh Dist., Hanoi 10000, Vietnam) and registration will be at 09:30am in Song Hong Bar. Please ensure you are checked out and ready in reception on time, departure 10:00am.

For those not staying at the Pan Pacific Hotel, please ask your hotel reception support by arrange a taxi to the meeting point at 09.30am for registration.

PRIVATE ARRIVAL AT HALONG BAY

For passengers already in Ha Long Bay on the night before, please come to Tuan Chau International Jetty. Embarkation time will be between 12:00 and 13:00.

Please contact our emergency number: +84 936 903 168 for further assistant you might wishes.

DAY 11 VIET TRI

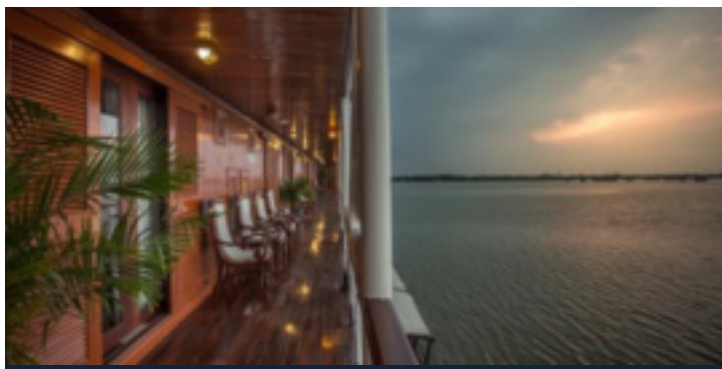
After lunch at local restaurant departure for Hanoi Noi Bai International Airport and Hanoi hotels. Estimated arrival at Hanoi Airport between 14:30 to 14.45, hotels in Hanoi arriving between 15:30 to 16.00. Your flight out of Hanoi airport must be after 16.00pm (domestic) or 17.00pm (international).

Our last drop off is at the Pan Pacific Hanoi Hotel for passengers staying in Hanoi.

PANDAW STATEROOMS

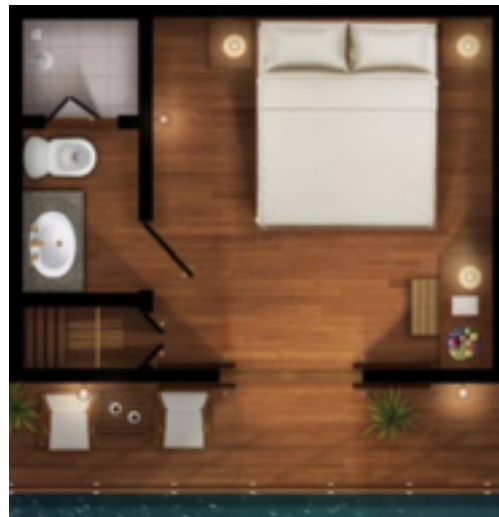
The Pandaw stateroom is the most celebrated feature of our ships, combining splendid colonial-era character with exquisite contemporary comfort.

Finished in brass and teak, the main and upper deck rooms are a spacious 168 square feet (15.6 sqm), with the exception of the Zawgyi Pandaw which is 150 square feet (14 sqm). As the space is much loved by all our passengers, we have ensured that with each ship we build, the stateroom remains essentially the same. Be advised: our cabins do not have mini-bars, satellite TV's, internet access or telephones. Passengers tend to choose Pandaw in order to escape from the tiresome features found in international business hotels.



- Fruit and flowers on arrival
- Kimonos and slippers
- Spa-branded amenities
- Unlimited mineral water

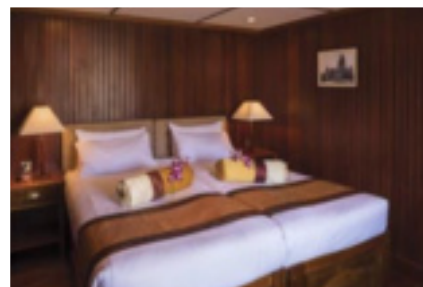
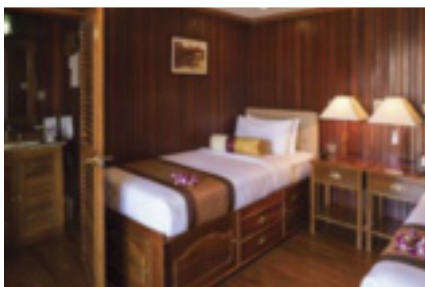
Bedroom	12' x 10'
Bathroom	6' x 4'
Showeroom	2' 8" x 3' 4"
Single Bed	6' 7" x 3' 3"



DOUBLE CONFIGURATION



TWIN CONFIGURATION



PANDAW SHIPS

RV Angkor Pandaw

Sister to the Katha and from the same yard delivered in 2013, the only difference with the Katha is an enclosed air conditioned dining room insisted on by an American charterer. Originally on the Mekong in 2015 we transferred her to the Red River in North Vietnam. In fact the enclosed dining room has proved useful as it can be cold up there in winter.

The ship has quality mountain bikes for your independent exploration.

Images of RV Angkor Pandaw



- **Build:** 2012 in Saigon
- **Length:** 138.61ft / 42.25m
- **Beam:** 8.50ft / 8.70m
- **Draft:** 3ft / 90cm
- **Berths:** 32 pax

ACCOMMODATION

- 10 main deck staterooms and 6 upper deck staterooms
- Air-conditioned panorama dining room
- Spacious, open-air lounge
- Observation deck
- Lounge bar
- 24hrs hospitality bar
- Fair-trade Shop
- Guest relation desk
- Library with contemporary and classic literature
- Hair Dryers in all cabins

WINING & DINING

- Local master chef heading an experienced international culinary team
- Semi-buffet breakfast, Semi-buffet lunch, and seated theme dinners
- Daily lean & light menu options
- Complimentary local mineral water, jugged coffee, teas & tisanes
- Extensive wine list with premium wines
- Series of cultural performances, educational talks, cooking classes, and ship tour
- Welcome drink on arrival
- Welcome cocktail
- Farewell reception
- Theme dinners
- Lounge bar
- 24hrs hospitality bar
- Onboard bakery with daily freshly baked breads and rolls

ON EXCURSIONS

- Admissions
- Shoe cleaning after excursions
- Bottled drinking water
- We give away aluminium water bottles
- Cold towel service after excursions
- Refreshing drink following excursions
- Full-size motor coach on all excursions
- 1st aid trained assistant guide to follow all tours and excursions

SAFETY & SECURITY

- All onboard crew is trained and certified as per international marine standards
- Fire alarm system in all cabins, public areas and back areas
- Firefighting system in all ship areas
- Expert marine superintendant
- 24 hrs watch on duty
- Certified hygiene standards for all areas (Johnson & Diversey)

ONBOARD STAFF

- Captain
- River Pilot
- First Officer
- Chief Engineer
- 1st Engineer
- Electrician
- Bosun & nautical crew
- Ship manager
- Housekeeping
- Dining
- Bar keeper
- Chefs
- Spa therapist
- Local tour guides

PUBLIC SPACES

- Guest relation desk
- Shop, supporting fair trade
- Library with contemporary and classic literature
- Wireless internet in all public areas

PRE & POST EXTENSIONS

Pre & Post Bookable via Pandaw.com as add on

Pre Tour

HANOI

(SOFITEL LEGEND
METROPOLE)

UPSTREAM

Hanoi is a magical and charming city. You will find that the character, history and romance of the Sofitel Legend Metropole Hanoi may add a little extra special something to your journey here. Savour the French art de vivre blended with elegant Vietnamese touches and enjoy this wonderful place.



DAY 1 ARRIVAL IN HANOI

Our guide will pick you up at the airport and bring you to your hotel. Enjoy this bustling Asian metropolis at your own leisure. Overnight at the hotel.

Please note: Guides and drivers are not allowed inside the terminal building. We will be waiting for you outside with a Pandaw sign. Hanoi Airport has two exits; if you don't see us, please try the other exit on the same level (30 meters).

DAY 2 DEPARTURE

Transfer and embark your Pandaw cruise.

Sofitel Legend Metropole Hanoi

Located in the heart of the old city, the Sofitel Legend Metropole Hanoi is an iconic award-winning luxury Hanoi old quarter hotel. Blending a heritage colonial style with neo-classical luxury and a dash of modernity, you'll find an elegance during your stay you're unlikely to experience anywhere else. Located only 35km away from Hanoi Noibai airport, and mere steps from the Opera House in Hanoi's culturally rich French Quarter, one of Hanoi's prime locations for leisure and business trips.

15 Ngo Quyen Street, Hoan Kiem District, 15 Ngo Quyen, Hoan Kiem 100000, Hanoi
Tel: +84 24 3826 6919

[Visit hotel website](#)



Rates include

All transfers as above by coach or car with local guide, 1 night accommodation with breakfast included.

Extension Code: LTM-PANDAW-05

PRE & POST EXTENSIONS

Pre & Post Bookable via Pandaw.com as add on

Pre Tour

HANOI

(SILK PATH BOUTIQUE)

UPSTREAM

Welcome to this charming boutique hotel situated a stone's throw from Hoan Kiem Lake, the historical center of Hanoi. Silk Path Boutique Hanoi is an oasis of distinguished design and serenity in the bustling heart of the city, putting you on the doorstep of the capital's most inspiring sights, top shopping areas and the street food delights that have put Hanoi on every foodie's bucket list.



DAY 1 ARRIVAL IN HANOI

Our guide will pick you up at the airport and bring you to your hotel. Enjoy this bustling Asian metropolis at your own leisure. Overnight at the hotel.

Please note: Guides and drivers are not allowed inside the terminal building. We will be waiting for you outside with a Pandaw sign. Hanoi Airport has two exits; if you don't see us, please try the other exit on the same level (30 meters).

DAY 2 DEPARTURE

Transfer and embark your Pandaw cruise.

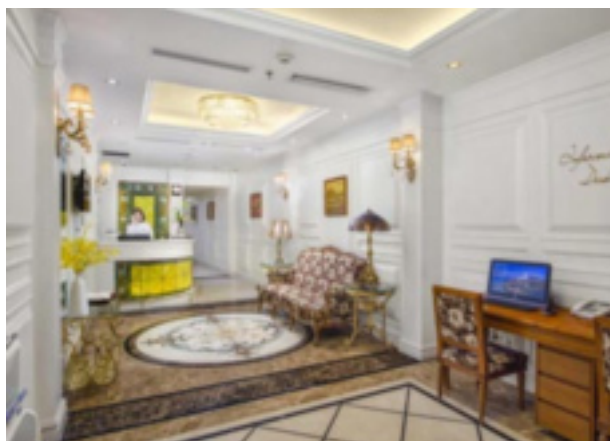
Silk Path Boutique Hanoi

Welcome to our charming boutique hotel situated a stone's throw from Hoan Kiem Lake, the historical center of Hanoi. Silk Path Boutique Hanoi is an oasis of distinguished design and serenity in the bustling heart of the city, putting you on the doorstep of the capital's most inspiring sights, top shopping areas and the street food delights that have put Hanoi on every foodie's bucket list.

21 Hang Khay, Hoan Kiem, Hanoi

Tel: +84 24 3938 5555

[Visit hotel website](#)



Rates include

All transfers as above by coach or car with local guide, 1 night accommodation with breakfast included.

Extension Code: LTM-PANDAW-06

PRE & POST EXTENSIONS

Pre & Post Bookable via Pandaw.com as add on

Pre Tour

HUE & HOI AN

4 NIGHTS

UPSTREAM



Hue and Hoi An are two of Vietnam's scenic and historic highlights and a 'must see;' on most people's visit to this most wonderful country. Our included trip on the Perfume River and visit to the enormous Hue Citadel are fascinating. Hoi An is best explored independently and retains a charming village feel which comes alive after sunset with the glow of red lanterns and the senses of Asia. And, of course, enjoy time to relax at your beach resort.

We are pleased to offer a pre and post extension staying in delightful and specially selected boutique hotels, including a connecting domestic flight, all transfers, excursions in Hue, a scenic journey from Hue to Hoi An and 2-nights in Hoi An. It is possible to extend your stay in Hoi An if required.

This is a Pandaw group tour.

DAY 1 ARRIVAL IN HUE

Individual arrival at Hue airport, meet your local guide and transfer to your hotel for a 2-night stay on a bed and breakfast basis. The rest of the day is free to enjoy the hotel and relax. **Meals:** none

DAY 2 HUE

This morning we take a boat trip on the serene Perfume River to the best-known pagoda in Middle Vietnam, Thien Mu. Then we visit to the impressive tomb of former Emperor Tu Duc and a beautiful garden once belonging to the royalty followed by a royal style lunch at a local restaurant (included). In the afternoon, visit Hue citadel including Noon Gate, Thai Hoa Palace, Royal Urns and the ruins of the Forbidden Purple City. **Meals:** Breakfast at the Hotel, Lunch at local restaurant.

DAY 3 HUE - HOI AN

After breakfast we leave Hue for Hoi An. En route we'll travel through the Ocean Clouds Pass, visit Non Nuoc Beach and the fascinating Cham Museum. We continue to your hotel in Hoi An. In the afternoon, you will have time to explore this charming and wonderfully preserved merchant town that retains Chinese, Japanese, Vietnamese and European influences from its flourishing old days. **Meals:** Breakfast at hotel.

DAY 4 HOI AN

Day at leisure. Explore the beautiful old town of Hoi An or relax at the beach. **Meals:** Breakfast at hotel.

DAY 5 HOI AN - HANOI

Transfer to Danang Airport for morning flight to Hanoi Airport, followed by transfer to the Angkor Pandaw. It is possible to extend your stay in Hoian - please email information@pandaw.com for availability and prices. **Meals:** Breakfast at hotel.

CONT'D ➔

PRE & POST EXTENSIONS

Pre & Post Bookable via Pandaw.com as add on

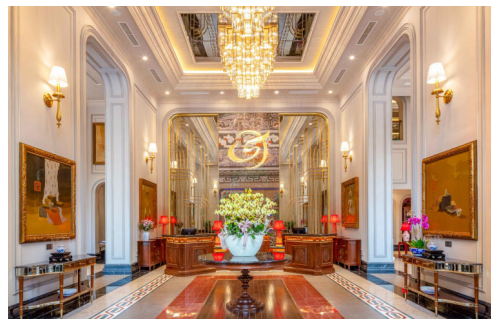
Silk Path Grand Hue

Hue is unlike anywhere else in the country. Tree-lined streets branch from the winding Perfume River. Tombs and temples lay embedded in the countryside. Pagodas and palaces offer mysterious and enticing atmospheres. The Silk Path Grand Hue Hotel captures all of these elements, wrapped by a broad French boulevard and a snaking canal. The character of the neighborhood – colonial mansions, traditional garden houses and the city’s historic train station – inspired the hotel’s concept and design.

02 Le Loi Street, Hue, Vietnam

Tel: +84 234 397 5555

[Visit Hotel Website](#)



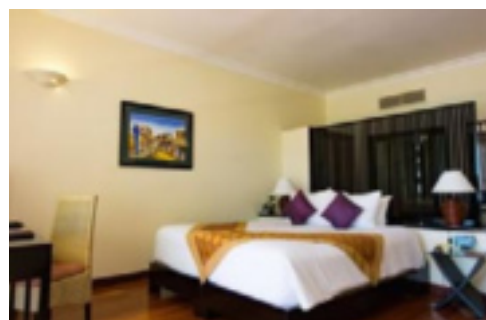
Victoria Hoi An Beach Resort & Spa

Victoria Hoi An Beach Resort & Spa replicates a traditional fishing village with small streets, water ponds and village houses with clay tiled roofs. The resort offers comfortable rooms incorporating unique design features inspired by traditional Vietnamese, Japanese and French colonial elements. Combining the elegance of local handicraft with the comfort of an international hotel.

Cua Dai Beach, Hoi An Town, Quang Nam

Tel: 0235 3927 040

[Visit Hotel Website](#)



Rates include

English speaking guide on tours, 1x lunch at local restaurant, economy one-way domestic air ticket Danang - Hanoi, hotels as advertised, transportation by AC vehicle, daily breakfast, and entrance fees.

Rates exclude

International flights, visa, travel insurance, not mentioned beverages and meal.

Extension Code: LTM-PANDAW-15

PRE & POST EXTENSIONS

Pre & Post Bookable via Pandaw.com as add on

Post Tour

SAPA & HANOI

UPSTREAM

Explore Sapa with Pandaw in combination with your Red River expedition. Famous for its terraced rice paddies & highlands, Sapa is home to more than 30 colorful hill tribes and close to Vietnam's highest peak, Mount Fansipan. During colonial times Sapa - surrounded by what is referred to as the "Vietnamese Alps" - was a hill station where the French escaped the Hanoi heat, and this heritage is reflected in our elegant, regal interior design and architecture.



DAY 1 TRANSFER TO SAPA

After lunch, transfer from ship to Sapa. Arrive at the Silk Path Grand Sapa and check in to the mountaintop retreat before enjoying dinner in the hotel.

Overnight Silk Path Grand Sapa

Meals: Breakfast on ship, Lunch, Dinner

DAY 2 SAPA

After breakfast, we visit Mount Fansipan, the Roof of Indochina, 3143m above the sea level. Starting your trip by train from central Sapa we continue by cable car for our journey upwards. Enjoy the fresh air and the beautiful landscapes from the peak as well as the various temples located high in the mountain. In the afternoon, your guide will offer a choice of excursions including the local market, national forest trek or simply relaxing and enjoying the facilities at the hotel.

Overnight: Silk Path Grand Sapa

Meals: Breakfast & Lunch

DAY 3 SAPA

Today we explore the various hilltribe peoples that reside in this mountainous region with trekking through the breathtaking terraced mountainsides and local village visits. We check out of the hotel early before visiting the H'mong people and Red Dao people with exact stops are dependent on weather conditions and physical ability and can be tailored with your local guide. A picnic lunch amidst the dramatic scenery of Sapa is provided. After the day's excursions, we transfer to Lao Cai train station and relax in the exclusive Chapa lounge for dinner and showers before we board our luxury overnight train to Hanoi.

Overnight aboard Chapa Luxury Train

Meals: Breakfast, Lunch, Dinner

CONT'D ➡

PRE & POST EXTENSIONS

Pre & Post Bookable via Pandaw.com as add on

DAY 4 HANOI

Early morning arrival into Hanoi followed by transfer to your hotel for check-in. Enjoy breakfast at the hotel and free time in the morning before we explore Hanoi further. We visit the Royal Palace, the Ethnic Minority Museum as well as the house of Uncle Chuong to learn more about ancient Hanoi.

DAY 5 HANOI

Breakfast at your hotel, transfer to the airport.

Meals: Breakfast

Silk Path Boutique Hanoi

Welcome to our charming boutique hotel situated a stone's throw from Hoan Kiem Lake, the historical center of Hanoi. Silk Path Boutique Hanoi is an oasis of distinguished design and serenity in the bustling heart of the city, putting you on the doorstep of the capital's most inspiring sights, top shopping areas and the street food delights that have put Hanoi on every foodie's bucket list.

21 Hang Khay, Hoan Kiem, Hanoi

Tel: +84 24 3938 5555

[Visit hotel website](#)



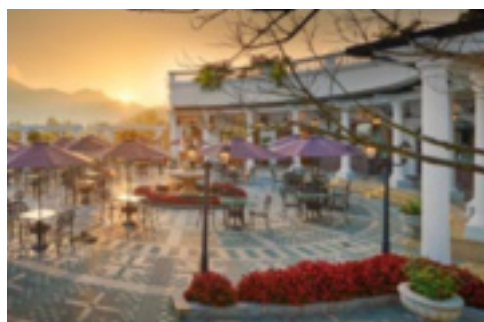
Silk Path Grand Sapa

Welcome to our mountain resort, perched on a private spot atop one of Sapa's highest hills. Here time stands still, giving you ample opportunities to stroll through the flower gardens and absorb captivating views of the surrounding mountain range. During colonial times Sapa – surrounded by what is referred to as the "Vietnamese Alps" - was a hill station where the French escaped the Hanoi heat, and this heritage is reflected in our elegant, regal interior design and architecture.

Doi Quan 6, Group 5, Sapa, Lao Cai, Vietnam

Tel: +84 214 3788 555

[Visit hotel website](#)



Rates include

Transfers and tours as per itinerary, accommodation at the Silk Path Boutique Hanoi and the Silk Path Grand Sapa, with daily breakfast and three lunches and one dinner during the tour.

Extension Code: LTM-PANDAW-11

PRE & POST EXTENSIONS

Pre & Post Bookable via Pandaw.com as add on

Post Tour

HUE & HOI AN

4 NIGHTS

UPSTREAM



Hue and Hoi An are two of Vietnam's scenic and historic highlights and a 'must see;' on most people's visit to this most wonderful country. Our included trip on the Perfume River and visit to the enormous Hue Citadel are fascinating. Hoi An is best explored independently and retains a charming village feel which comes alive after sunset with the glow of red lanterns and the senses of Asia. And, of course, enjoy time to relax at your beach resort.

We are pleased to offer a pre and post extension staying in delightful and specially selected boutique hotels, including a connecting domestic flight, all transfers, excursions in Hue, a scenic journey from Hue to Hoi An and 2-nights in Hoi An. It is possible to extend your stay in Hoi An if required.

This is a Pandaw group tour.

DAY 1 HANOI - HUE

Disembark and fly from Hanoi to Hue. On arrival at Hue airport, meet your local guide and transfer to on a bed and breakfast basis. The rest of the day is free to enjoy the hotel and relax. **Meals:** none

DAY 2 HUE

This morning we take a boat trip on the serene Perfume River to the best-known pagoda in Middle Vietnam, Thien Mu. Then we visit to the impressive tomb of former Emperor Tu Duc and a beautiful garden once belonging to the royalty followed by a royal style lunch at a local restaurant (included). In the afternoon, visit Hue citadel including Noon Gate, Thai Hoa Palace, Royal Urns and the ruins of the Forbidden Purple City. **Meals:** Breakfast at the Hotel, Lunch at local restaurant.

DAY 3 HUE - HOI AN

After breakfast we leave Hue for Hoi An. En route we'll travel through the Ocean Clouds Pass, visit Non Nuoc Beach and the fascinating Cham Museum. We continue to your hotel in Hoi An. In the afternoon, you will have time to explore this charming and wonderfully preserved merchant town that retains Chinese, Japanese, Vietnamese and European influences from its flourishing old days. **Meals:** Breakfast at hotel.

DAY 4 HOI AN

Day at leisure. Explore the beautiful old town of Hoi An or relax at the beach. **Meals:** Breakfast at hotel.

DAY 5 HOI AN - DANANG

Transfer to Danang Airport for your onward flight. It is possible to extend your stay in Hoian – please email information@pandaw.com for availability and prices. **Meals:** Breakfast at hotel.

CONT'D ➡

PRE & POST EXTENSIONS

Pre & Post Bookable via Pandaw.com as add on

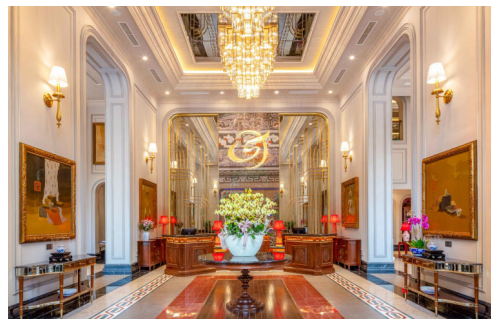
Silk Path Grand Hue

Hue is unlike anywhere else in the country. Tree-lined streets branch from the winding Perfume River. Tombs and temples lay embedded in the countryside. Pagodas and palaces offer mysterious and enticing atmospheres. The Silk Path Grand Hue Hotel captures all of these elements, wrapped by a broad French boulevard and a snaking canal. The character of the neighborhood – colonial mansions, traditional garden houses and the city's historic train station – inspired the hotel's concept and design.

02 Le Loi Street, Hue, Vietnam

Tel: +84 234 397 5555

[Visit Hotel Website](#)



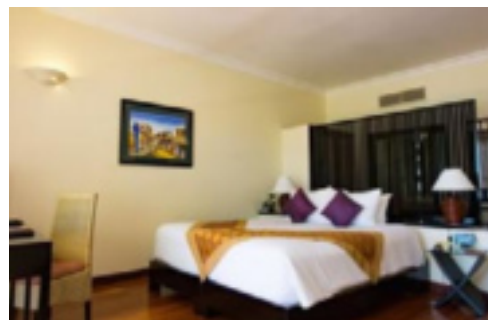
Victoria Hoi An Beach Resort & Spa

Victoria Hoi An Beach Resort & Spa replicates a traditional fishing village with small streets, water ponds and village houses with clay tiled roofs. The resort offers comfortable rooms incorporating unique design features inspired by traditional Vietnamese, Japanese and French colonial elements. Combining the elegance of local handicraft with the comfort of an international hotel.

Cua Dai Beach, Hoi An Town, Quang Nam

Tel: 0235 3927 040

[Visit Hotel Website](#)



Rates include

English speaking guide on tours, 1x lunch at local restaurant, economy one-way domestic air ticket Hanoi to Hue, hotels as advertised, transportation by AC vehicle, daily breakfast, and entrance fees.

Rates exclude

International flights, visa, travel insurance, not mentioned beverages and meal.

Extension Code: LTM-PANDAW-16

OPTIONAL PACKAGE ADDONS & OTHER INFORMATION

Optional cruise add ons

PRE-BOOKABLE HOUSE WINE PACKAGE [Read more](#)

FREE FLOW DRINKS [Read more](#)

FREE FLOW DRINKS & WINE PACKAGE [Read more](#)

River Conditions Warning!

The rivers you will sail on are subject to seasonal rises and falls of water level, in some places as much as 30 metres. Water levels can change dramatically overnight and a sudden rise can impede our progress upstream considerably and even prevent us from passing under certain bridges. A sudden fall can result in our being unable to get into certain places or go as far upstream as we would hope. Groundings on sandbars are not infrequent and are part of the excitement of any Pandaw expedition. Published itineraries are indicational only and subject to sudden change. In such events alternative itineraries will be provided and we do our best to ensure that if a stop is missed we make up for it with another stop. Passengers are thus forewarned and expected to be flexible and patient. River cruising in Asia can be a dramatic and adventurous experience - not like cruising the controlled waterways of Europe or America. Note also that we operate in areas with little or no developed infrastructure and subject to the strictures of local officialdom. Be prepared for this and it is all more the fun!

Useful Links

BOOKING TERMS & CONDITIONS [Read more](#)

GENERAL INFORMATION & LIFE ON BOARD [Read more](#)

VISA INFORMATION [Read more](#)

FOLLOW US ON SOCIAL MEDIA



facebook.com/pandawriverexpeditions



@pandaw_river_expeditions



@pandaw-river-expeditions



Pandaw Expeditions



PANDAW

UK

 FREEPHONE 0800 038 1029

 uk@pandaw.com

GLOBAL

 +84 (0)28 4458 2618

 information@pandaw.com

NORTH AMERICA

 TOLL FREE 1-877-872-6329

 usa@pandaw.com

AUSTRALIA

 TOLL FREE 1800 207 625

 aus@pandaw.com

NEW ZEALAND

 TOLL FREE 0800 115 250

 aus@pandaw.com

GERMANY, SWITZERLAND & AUSTRIA

 +49 30 3464981 30

 dach@pandaw.com

P A N D A W . C O M